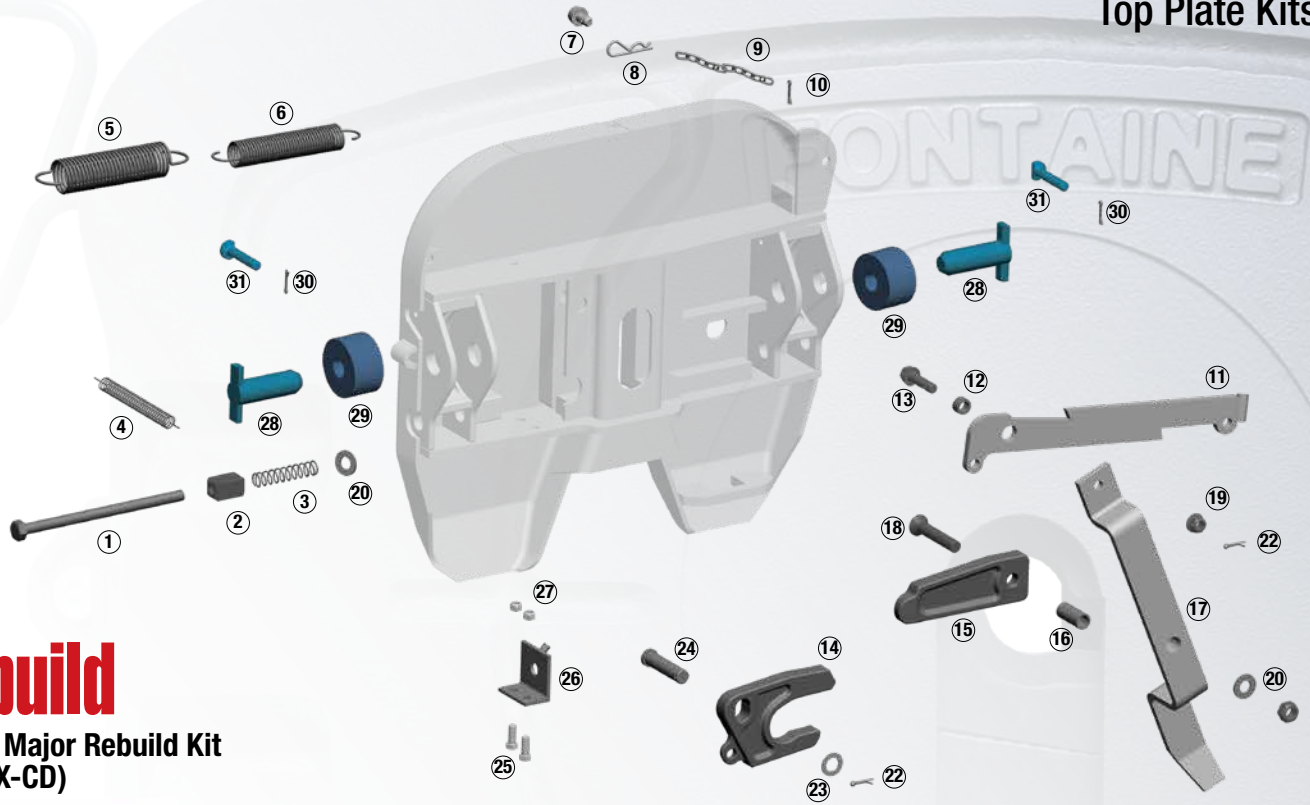


CD700 Series Custom Duty Top Plate Kits



Rebuild

CD700 Major Rebuild Kit (KIT-RX-CD)

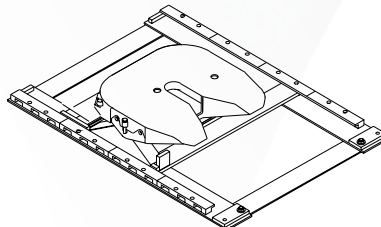


Item	Description	Quantity
①	Wedge-stop rod	1
②	Wedge-stop rod nut	1
③	Wedge-stop rod spring	1
④	Jaw spring	1
⑤	Pull handle spring 6.7" x 1.8"	1
⑥	Pull handle spring 6.75" x 1.35"	1
⑦	Handle lock pin	1
⑧	Hairpin cotter	1
⑨	Chain	1
⑩	Cotter pin, 3/16" x 1"	1
⑪	Pull handle	1
⑫	Bushing, 7/16"	1
⑬	Hex head flanged bolt, nut	1
⑭	Jaw	1
⑮	Wedge	1
⑯	Bushing	1
⑰	Operating handle	1
⑱	Flat head socket, 5/8"-11 x 3-1/2"	1
⑲	Flanged Hex Locknut 1/2" - 13	1
⑳	Flat washer, 5/8", plain	1
㉑	Hex lock nut, 5/8" -11, grade "B"	1
㉒	Cotter pin, 5/32" x 1"	2
㉓	Flat washer 3/4", plain	1
㉔	Clevis pin, 3/4" x 3"	1
㉕	Flat head bolt, 5/8-11 x 3-1/2"	2
㉖	Rod guide	1
㉗	Hex lock nut, 3/8"-16	2

Replace



SLTPLCD700-D5 (Driver side release)



Complete Air Slide Assembly
CD7AWB675024
6 3/4" height
24-inch slide travel

Complete Stationary Assembly
SLCD7FM5750
Stationary 5 3/4" inch height
Weld on option"

Pin and Bushing Kit (KIT-CD-PIN-224)

Item	Description	Quantity
⑳	Bracket pin	2
㉑	Bracket bushing	2
⑳	Cotter pin, 3/16" x 1"	2
㉓	Bracket retainer pin	2

Custom Duty Service Parts

Stationary mount components

BKTCB (Pair) Bracket for the SLCD7FM5750

Slide mount components for AWB

CDBKTAWB6PT CD air slide bracket 6.75" height

CDSL24B 24" CD side rail

CYL-COMP AWB air cylinder

KITRPAWB Locking wedge (pair)

