



## Repair

### Bracket pin kit (KIT-PIN-LLB)

Item	Description	Qty.
	Lower bracket bushing	2
	Upper bracket bushing	2
	Bracket pin	2
	Bracket retainer pin	2
	Cotter pin	2
	Bracket liner	2



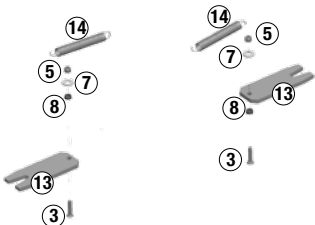
### Bushing kit (BSH-LLB)

	Lower bracket bushing	2
	Upper bracket bushing	2
	Bracket liner	2



### Repair kit (KITRPRATB)

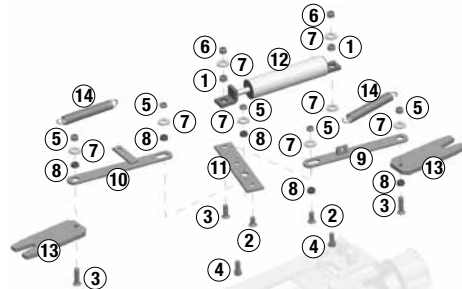
③	Flat head socket, 1/2" -13 x 2"	2
⑤	Hex jam nut, 1/2" -13, NY	2
⑦	Flat washer, 1/2" Type A, .132	2
⑧	Spacer bushing	2
⑬	Locking wedge, slide assembly	2
⑭	Locking member spring	2



## Rebuild

### Rebuild kit (KITRXATB)

Item	Description	Qty.
①	Spacer bushing	2
②	Flat head socket, 1/2" -13 x 1-1/2"	2
③	Flat head socket, 1/2" -13 x 2"	3
④	Hex head bolt, 1/2" -13 x 1"	2
⑤	Hex jam nut, 1/2" -13, NY	5
⑥	Hex lock nut, 1/2" -13, grade "C"	2
⑦	Flat washer, 1/2" Type A, .132	8
⑧	Spacer bushing	5
⑨	Pull bar, slide bracket	1
⑩	Pull bar, slide bracket	1
⑪	Latching lever	1
⑫	Composite Air Cylinder	1
⑬	Locking wedge, slide assembly	2
⑭	Locking member spring	2

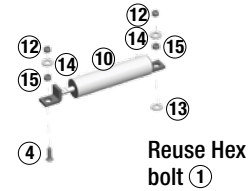


Bracket not included in kit

## Replace

### Cylinder kit (CYL-COMP)

Item	Description	Qty.
⑩	Composite Air Cylinder	1
④	Flat head socket, 1/2" -13 x 1-1/2", grade 5	1
⑭	Flat washer, 1/2" I.D., 1-3/8" O.D., plain	2
⑫	Hex lock nut, 1/2" -13, grade "C"	2
⑮	Bushing, 7/16"	2



Air slide bracket Part Number	Mounted Height*
BKTATB6PT	6-3/4"
BKTATB7PT	7-3/4"
BKTATB8PT	8-3/4"
BKTATB9PT	9-3/4"
BKTATB10PT	10-3/4"

\*Height is measured from top of truck frame to top of fifth wheel



Slide rails Part Number	Slide Travel	Overall Length
SLRTB12	12"	40"
SLRTB16	16"	45"
SLRTB24	24"	52"
SLRTB36	36"	64"
SLRTB48	48"	76"

