

# Part Number Identification

This guide explains the nomenclature for Fontaine Fifth Wheel complete assembly part numbers.

See example part number at right:

**SL6NWB675012**

## Release

**SL** = Side left  
**SR** = Side right  
**AA** = Air actuated  
**BL** = Blocked left (H7 only)  
**AL** = Auto-lube left  
**SLE** = Electronic lock indicator left (7000 only)

## Top plate model

**6** = No-Slack® 6000  
**7** = No-Slack® 7000  
**C** = 7000CC Clean Connect  
**H7** = No-Slack® H7

## Mounting Bracket model

**NWB** = Light weight outboard slide  
**BSL** = Stationary bracket mount  
**PML** = Adjustable plate mount  
**LWB** = Light weight slide bracket  
**AWB** = Air slide bracket  
**BLAWB** = Blocked Air slide bracket  
**AWX** = Air slide bracket  
**PS5** = Stationary short plate mount  
**BLPS5** = Blocked Stationary short plate mount

## Mounting height

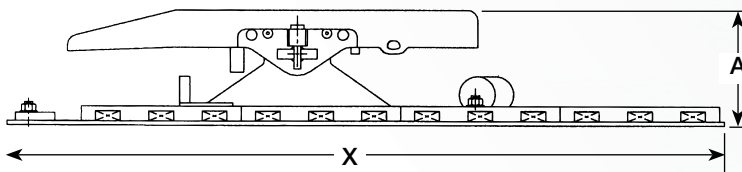
**6750** = 6-3/4"  
 Actual height from truck frame to top of fifth wheel.  
 Examples:  
 7125 = 7-1/8"  
 7250 = 7-1/4"  
 8375 = 8-3/8"  
 9750 = 9-3/4"

## Slide travel

**12** = 12" slide  
 Sliding fifth wheels only.  
 Examples:  
 12 = 12" slide  
 24 = 24" slide  
 36 = 36" slide  
 48 = 48" slide

# Measurements & Serial Number Location

## How do I measure a fifth wheel?



The installed height of all Fontaine models is measured from the top of the truck frame to the top of the fifth wheel. For standard models dimension "A" is a part of the model number. For example, if dimension "A" in this diagram is 7.75 inches, it would appear in the model number as 7750 (Example: SL7AWB**7750**24).

## How do I find the serial number

Serial number engraved directly into the right side of fifth wheel skirt. Note: position 5 and 6 of the serial number indicates the year built. Serial number is always 9 digits.



No-Slack® right side view serial number location

