

ARMOR

THE ONLY FIFTH WHEEL DESIGNED SPECIFICALLY FOR YARD TRUCKS

Faster repairs • Greater uptime • Lowest total cost of ownership

Pin and Bushing Replacement Instructions

Pin and Bushing Kit (ARMORPBK)



Pin and Bushing Kit

Part # **ARMORPBK**

Standard Repair Time:

30 Minutes

See video at fifthwheel.com/maintenance/
Choose "Pin and Bushing Replacement"



Pin and Bushing Replacement Video available at: fifthwheel.com/armor

Choose "Training" then "Pin and Bushing Replacement"

Tools Required

Crowbar
Pliers
9/16" socket
Kingpin tool

Personal Protective Equipment

Safety glasses
Work gloves
Steel toe boots



Warning!

- Keep hands away from throat of operating fifth wheel
- Wear Personal Protective Equipment (PPE)
- Make sure the wheel is disarmed before maintenance
- Follow all instructions
- Read operating manual before use
- Use proper procedures
- Use proper tools



For instructional video scan or go to fifthwheel.com/maintenance/



FONTAINE[®]

PARTS CONNECTION

fifthwheel.com • 800.874.9780

All kits include hardware

ARMOR

THE ONLY FIFTH WHEEL DESIGNED SPECIFICALLY FOR YARD TRUCKS

Faster repairs • Greater uptime • Lowest total cost of ownership

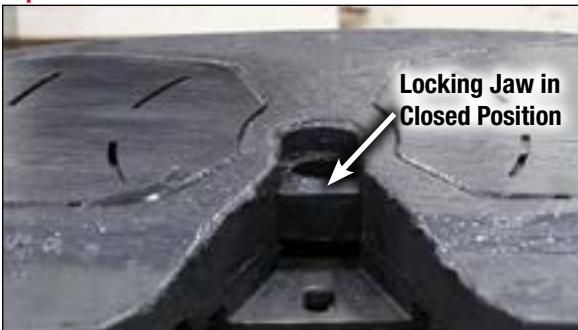
Disassembly

Hint: If you need help with parts identification see pages 5-7.

1



Trip the wheel closed using a crowbar. **NEVER use hands to trip an activated fifth wheel.**



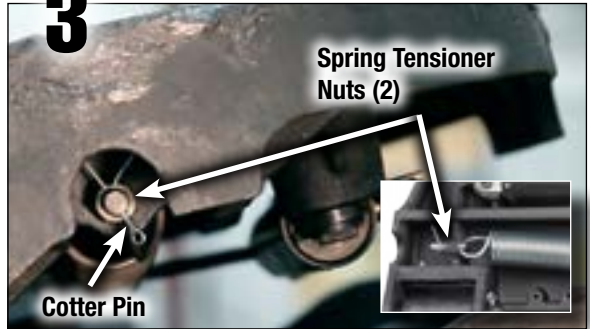
Hint: A fifth wheel is closed when the locking jaw is completely across the throat of the fifth wheel.

2



Raise the yard truck boom for easy access, then remove the air hose from the air cylinder quick release valve.

3

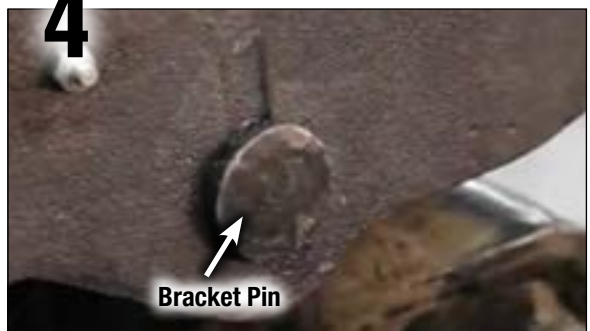


Remove two spring tension by removing the cotter pin with pliers. Then remove the two spring tensioner nuts. **Hint:** You can place a screwdriver in the main spring loop to prevent spring from rotating when unbolting nuts (see video).



This deactivates the fifth wheel and allows the user to perform maintenance.

4



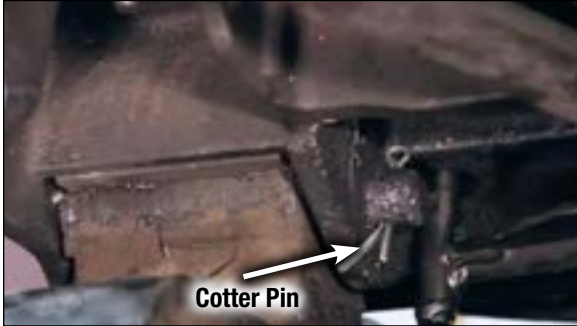
Bracket pins are secured by cotter pins located underneath the fifth wheel on both sides.

ARMOR

THE ONLY FIFTH WHEEL DESIGNED SPECIFICALLY FOR YARD TRUCKS

Faster repairs • Greater uptime • Lowest total cost of ownership

Disassembly



Remove cotter pins on both sides



Tap with hammer to loosen.



Pull out bracket pins from outside to remove.



Carefully lift the top plate using a crane or forklift; then push out the old busings on both sides.

ARMOR

THE ONLY FIFTH WHEEL DESIGNED SPECIFICALLY FOR YARD TRUCKS

Faster repairs • Greater uptime • Lowest total cost of ownership

Assembly

1



Grease the new busings and slide them into place on both sides of the fifth wheel.

2



Carefully lower the top plate back onto the brackets; then insert the new pins and set with a hammer.

3



Secure the bracket pins with cotter pins on both sides of the fifth wheel.

4



Connect the air hose to the air cylinder quick release valve.

5



Tilt the fifth wheel down and lower the yard truck boom.

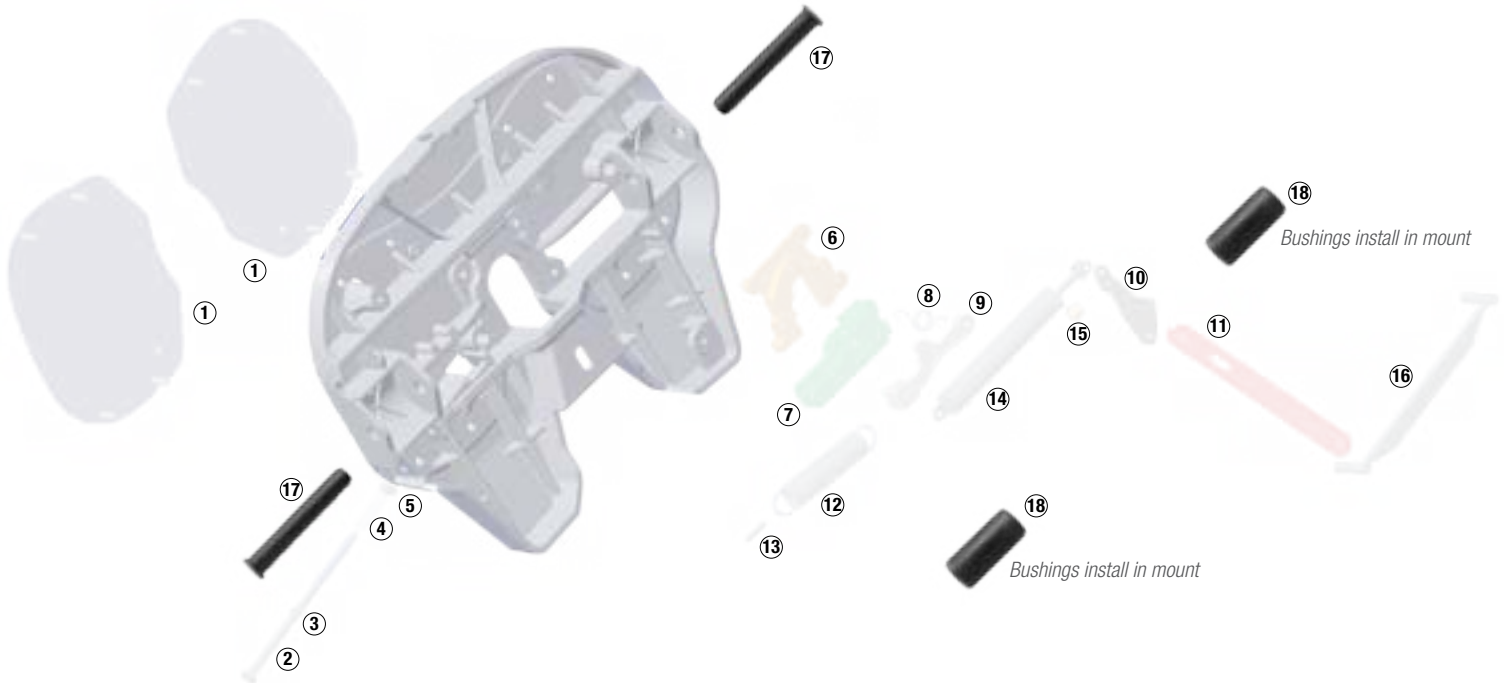
Test the wheel using the Fontaine kingpin tool (ARMORKPK) by frequently opening and closing the fifth wheel (see video).

ARMOR

THE ONLY FIFTH WHEEL DESIGNED SPECIFICALLY FOR YARD TRUCKS

Faster repairs • Greater uptime • Lowest total cost of ownership

Part Identification



Item	Description	Quantity	Included in kit
①	Wear plate	2	ARMORWPK
②	Knockout rod	1	ARMORKRK
③	Knockout rod clip	1	ARMORKRK
④	Knockout rod spring	1	ARMORKRK
⑤	Knockout rod nut	1	ARMORKRK
⑥	Stationary jaw	1	ARMORSJK, ARMORLAK
⑦	Locking jaw	1	ARMORJRK, ARMORLAK
⑧	Torsion spring	1	ARMORTAK, ARMORLAK, ARMORSRK
⑨	Trigger	1	ARMORTAK, ARMORLAK
⑩	Secondary lock	1	ARMORTAK, ARMORLAK
⑪	Operating handle	1	ARMORTAK, ARMORLAK
⑫	Main spring	1	ARMORTAK, ARMORLAK, ARMORSRK
⑬	Spring tensioner	1	ARMORTAK, ARMORLAK, ARMORSRK
⑭	Air Cylinder	1	ARMORACK
⑮	3-way air valve	1	ARMORACK
⑯	Cover plate	1	ARMORTAK, ARMORLAK, ARMORCPK
⑰	Bracket Pins	2	ARMORPBK
⑱	Bushings	2	ARMORPBK



FONTAINE®

PARTS CONNECTION

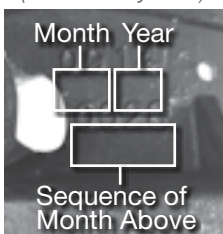
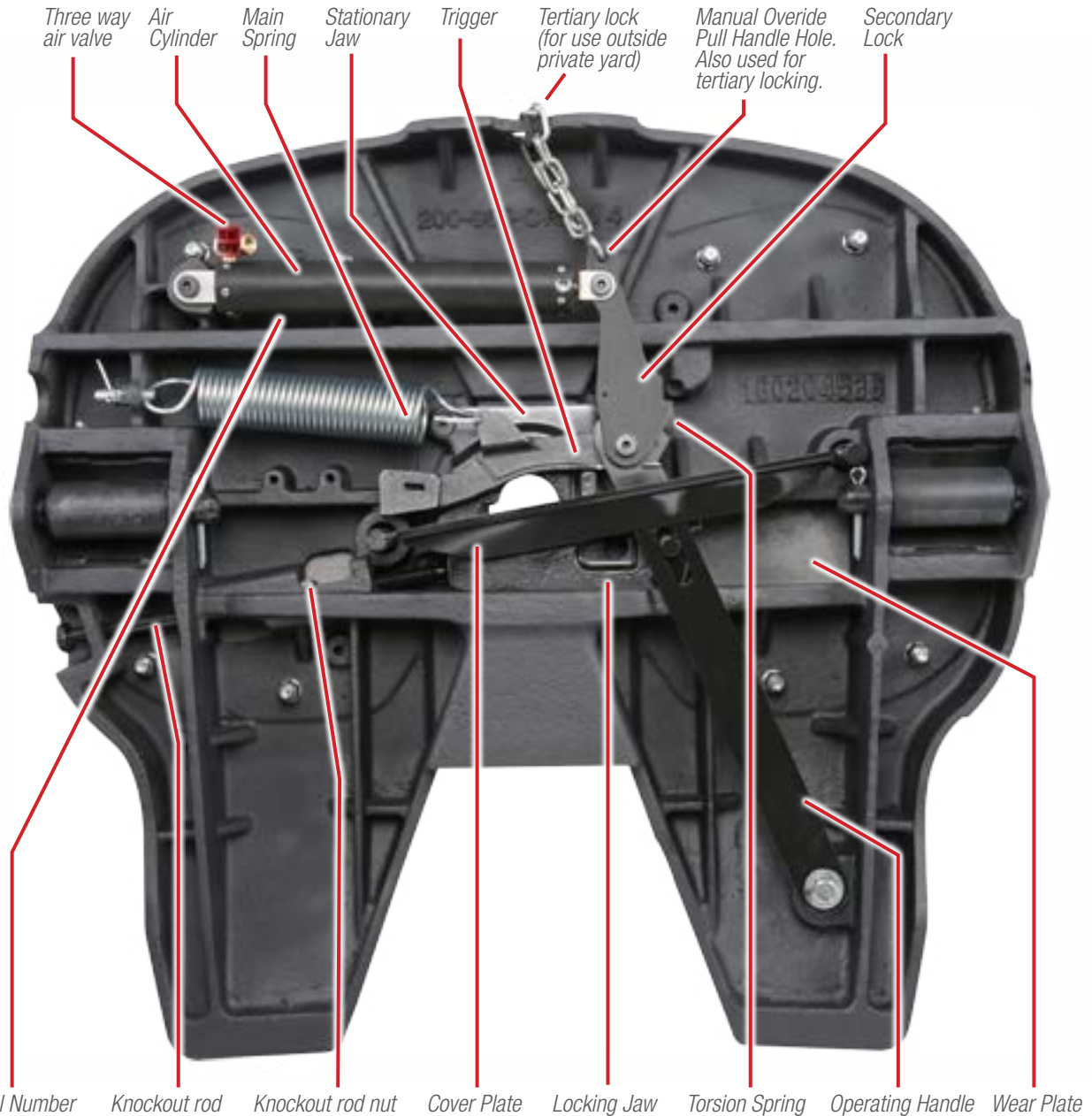
fifthwheel.com • 800.874.9780

ARMOR

THE ONLY FIFTH WHEEL DESIGNED SPECIFICALLY FOR YARD TRUCKS

Faster repairs • Greater uptime • Lowest total cost of ownership

Part Identification – Bottom View



28th fifth wheel
manufactured in
September, 2014



FONTAINE[®]

PARTS CONNECTION

fifthwheel.com • 800.874.9780

ARMOR

THE ONLY FIFTH WHEEL DESIGNED SPECIFICALLY FOR YARD TRUCKS

Faster repairs • Greater uptime • Lowest total cost of ownership

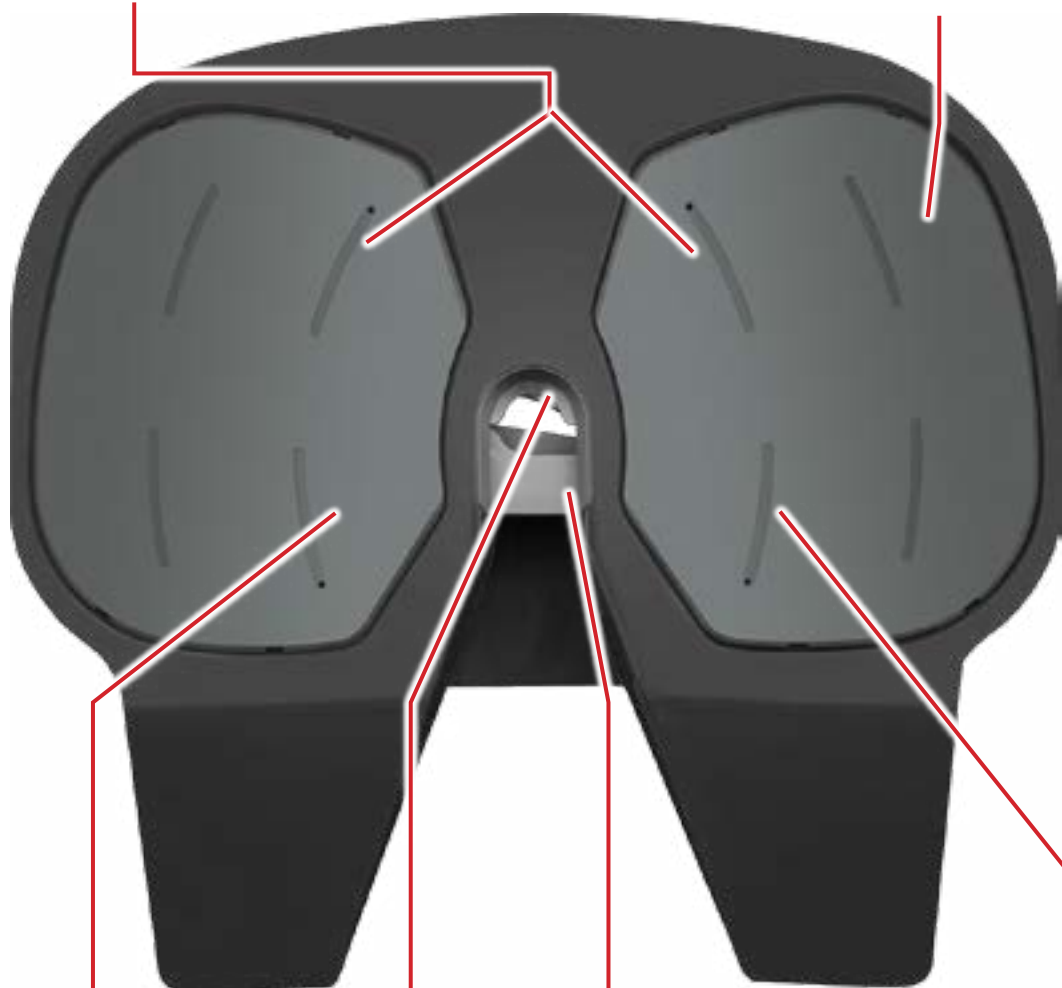
Part Identification – Top View



Wear Plates (removable for easy maintenance)



Air cylinder bolt access (under wear plate)



Locking jaw access (under wear plate). Locking jaw slides in for easy maintenance.



Stationary Jaw

Locking Jaw

Knockout rod access (under wear plate). Slot for easy knockout rod maintenance.

