

ARMOR

THE ONLY FIFTH WHEEL DESIGNED SPECIFICALLY FOR YARD TRUCKS

Faster repairs • Greater uptime • Lowest total cost of ownership

Lock Assembly Kit Replacement Instructions

Lock Assembly Kit (ARMORLAK)



Lock Assembly Kit

Part # **ARMORLAK**

Standard Repair Time:

1 Hour



Lock Assembly Kit Video available at:
fifthwheel.com/armor

Choose "Training" then "Lock Assembly Replacement"

Item	Description	Quantity
①	Stationary jaw	1
②	Locking jaw	1
③	Torsion spring	1
④	Trigger	1
⑤	Secondary lock	1
⑥	Operating handle	1
⑦	Main spring	1
⑧	Spring tensioner	1
⑨	Cover plate	1

See video at fifthwheel.com/maintenance/
Choose "Lock Assembly Replacement"



Tools Required
Crowbar
Pliers
3/4" deep well socket with 2" extension
9/16" socket
11/16" socket
1/4" allen wrench
Kingpin tool

Personal Protective Equipment
Safety glasses
Work gloves
Steel toe boots



Warning!

- Keep hands away from throat of operating fifth wheel
- Wear Personal Protective Equipment (PPE)
- Make sure the wheel is disarmed before maintenance
- Follow all instructions
- Read operating manual before use
- Use proper procedures
- Use proper tools



For instructional video scan or go to fifthwheel.com/maintenance/



FONTAINE
PARTS CONNECTION

fifthwheel.com • 800.874.9780

All kits include hardware

ARMOR

THE ONLY FIFTH WHEEL DESIGNED SPECIFICALLY FOR YARD TRUCKS

Faster repairs • Greater uptime • Lowest total cost of ownership

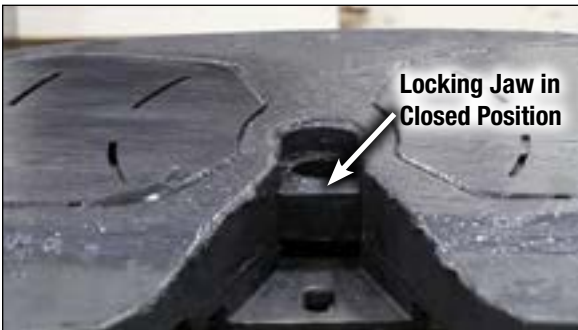
Disassembly

Hint: If you need help with parts identification see pages 9-11.

1

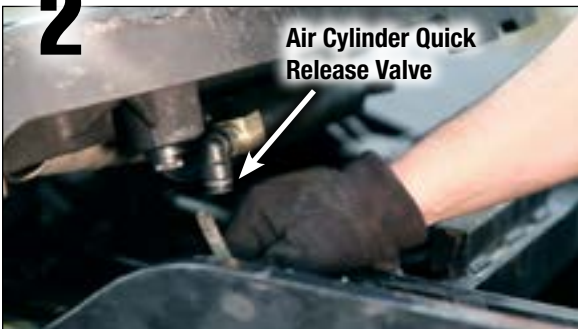


Trip the wheel closed using a crowbar. **NEVER use hands to trip an activated fifth wheel.**



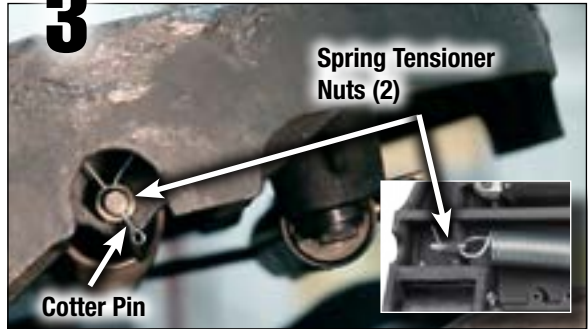
Hint: A fifth wheel is closed when the locking jaw is completely across the throat of the fifth wheel.

2



Raise the yard truck boom for easy access, then remove the air hose from the air cylinder quick release valve.

3

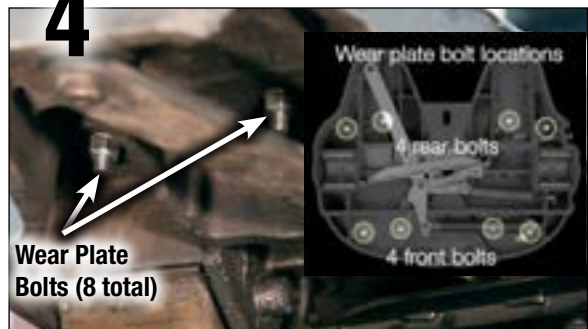


Remove two spring tension by removing the cotter pin with pliers. Then remove the two spring tensioner nuts. **Hint:** You can place a screwdriver in the main spring loop to prevent spring from rotating when unbolting nuts (see video).



This deactivates the fifth wheel and allows the user to perform maintenance.

4



Tilt the top plate down to access the two front bolts from the opposite side of the top plate. Remove the eight wear plate nuts and washers. Note all eight nut locations in photo.

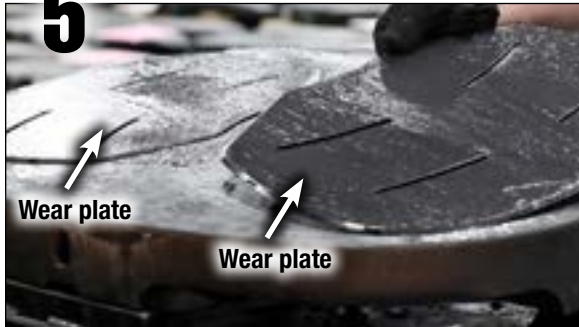
ARMOR

THE ONLY FIFTH WHEEL DESIGNED SPECIFICALLY FOR YARD TRUCKS

Faster repairs • Greater uptime • Lowest total cost of ownership

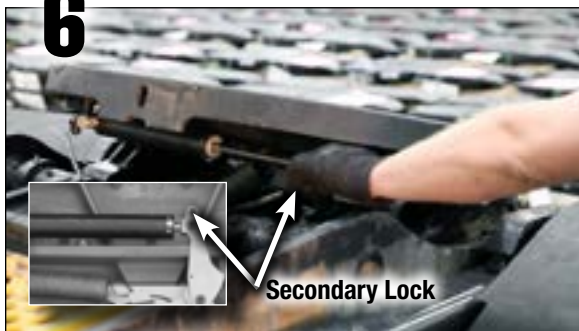
Disassembly

5



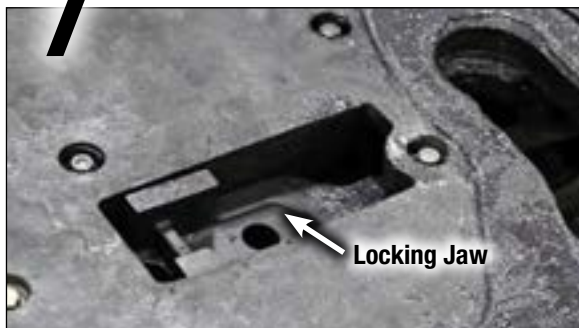
Remove both wear plates.

6



Tilt wheel down in rear to access secondary lock.
Pull the secondary lock to open the fifth wheel.

7

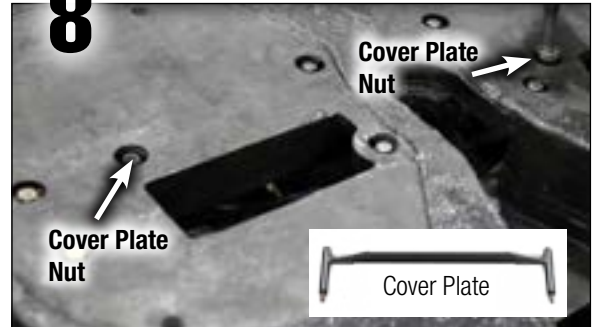


Notice locking jaw is now visible because wear plate is off
and fifth wheel is in open position.



Pull the locking jaw out of the top surface of the wheel.

8



Remove both cover plate nuts.



Push up cover plate to access the two cover plate nuts.



Remove cover plate from below.

9



Unscrew knockout rod until it clears the stationary jaw.

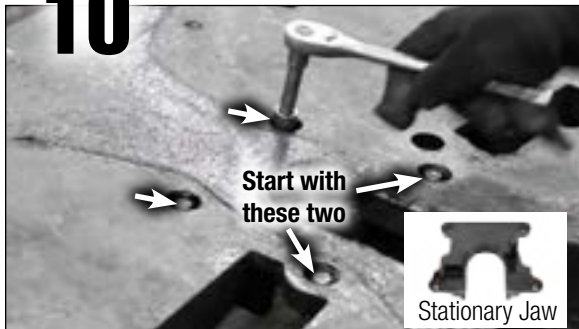
ARMOR

THE ONLY FIFTH WHEEL DESIGNED SPECIFICALLY FOR YARD TRUCKS

Faster repairs • Greater uptime • Lowest total cost of ownership

Disassembly

10



Unfasten the four stationary jaw nuts starting with the two rear nuts toward the toes.

12



Remove operating handle nut and bolt.

13



Remove air cylinder/secondary lock bolt.

11



Remove stationary jaw.

14



Remove trigger assembly.



Trigger Assembly

ARMOR

THE ONLY FIFTH WHEEL DESIGNED SPECIFICALLY FOR YARD TRUCKS

Faster repairs • Greater uptime • Lowest total cost of ownership

Assembly

1



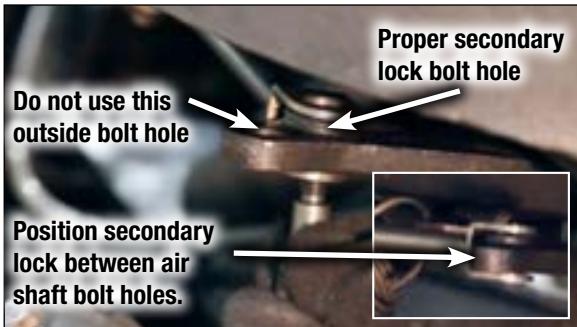
Insert new trigger assembly into top plate.



2



Fasten air cylinder bolt and tighten nut.



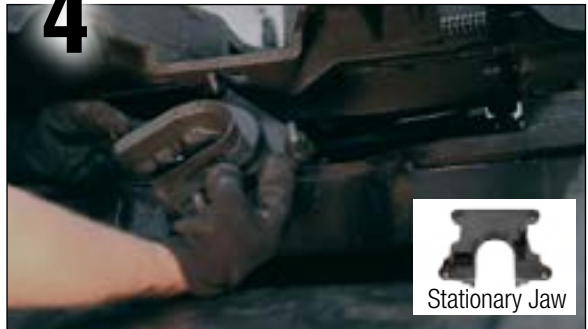
Fasten air cylinder to the correct secondary lock bolt hole. Outside hole in secondary lock is for manual operation. Inside hole is for the air cylinder bolt.

3

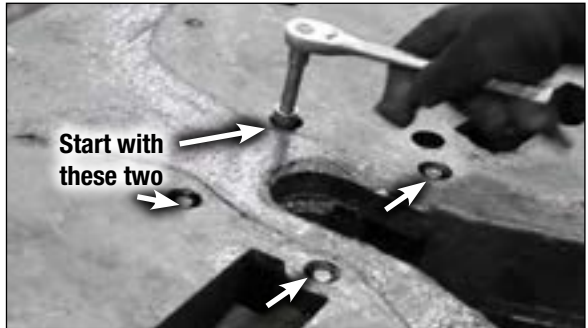


Install operating handle bolt.

4



Install stationary jaw.



Fasten the four stationary jaw nuts starting with the two rear nuts toward the toes.



Helpful hint: Keep the bolt from turning using a 1/4" allen wrench from below.

ARMOR

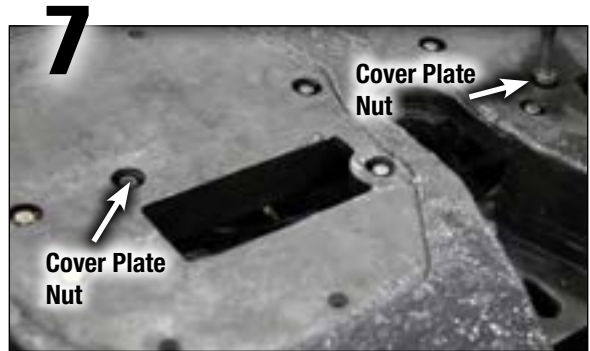
THE ONLY FIFTH WHEEL DESIGNED SPECIFICALLY FOR YARD TRUCKS

Faster repairs • Greater uptime • Lowest total cost of ownership

Assembly



Turn in the knockout rod all the way until it bottoms out.



Fasten the two cover plate nuts and bolts.



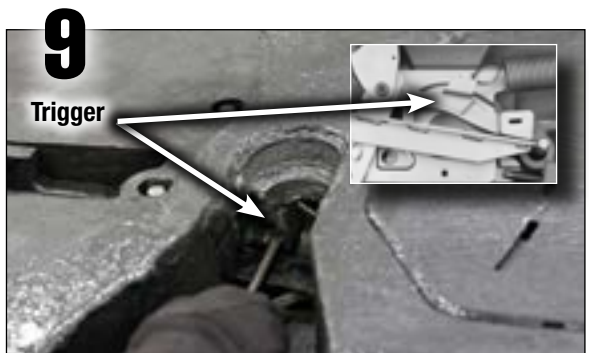
Install lock washers before installing new cover plate.



Position the jaw pin into the slot of the operating handle.



Make sure cover plate is orientate properly with the angled side pointing towards you.



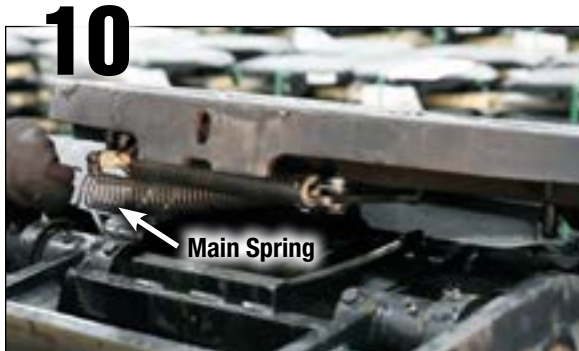
Trip the trigger off the stationary jaw stop. It pushes in.

ARMOR

THE ONLY FIFTH WHEEL DESIGNED SPECIFICALLY FOR YARD TRUCKS

Faster repairs • Greater uptime • Lowest total cost of ownership

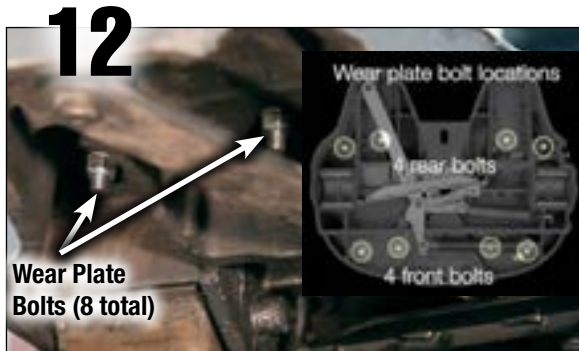
Assembly



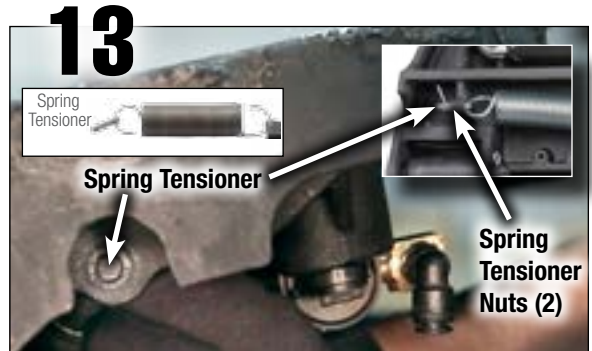
Close the fifth wheel by pulling the main spring.



Install both wear plates.



Install the eight wear plate nuts and washers. You can tilt fifth wheel up and down for easy access. Note all bolt locations in photo.



Insert the spring tensioner through the hole.

Install the TWO spring tensioner nuts. **Hint:** You can place a screwdriver in the main spring loop to prevent spring from rotating when bolting on nuts (see video).



Install the cotter pin.



Connect the air hose to the air cylinder quick release valve.

ARMOR

THE ONLY FIFTH WHEEL DESIGNED SPECIFICALLY FOR YARD TRUCKS

Faster repairs • Greater uptime • Lowest total cost of ownership

Assembly

16



Tilt the fifth wheel down and lower the yard truck boom.

Test the wheel using the Fontaine kingpin tool (ARMORKPK) by frequently opening and closing the fifth wheel (see video).

Test Kingpin Tool
Part # **ARMORKPK**



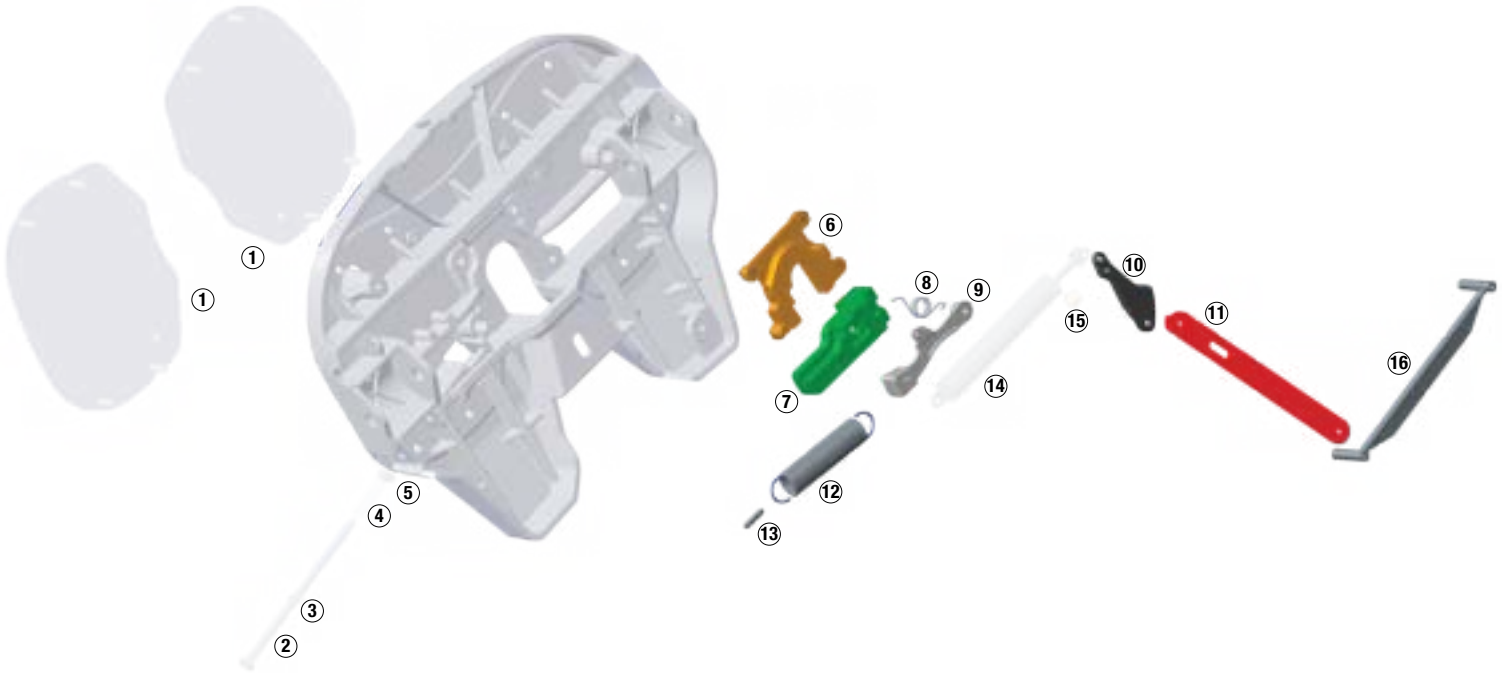
Test Kingpin Tool

ARMOR

THE ONLY FIFTH WHEEL DESIGNED SPECIFICALLY FOR YARD TRUCKS

Faster repairs • Greater uptime • Lowest total cost of ownership

Part Identification



Item	Description	Quantity	Included in kit
①	Wear plate	2	ARMORWPK
②	Knockout rod	1	ARMORKRK
③	Knockout rod clip	1	ARMORKRK
④	Knockout rod spring	1	ARMORKRK
⑤	Knockout rod nut	1	ARMORKRK
⑥	Stationary jaw	1	ARMORSJK, ARMORLAK
⑦	Locking jaw	1	ARMORJRK, ARMORLAK
⑧	Torsion spring	1	ARMORTAK, ARMORLAK, ARMORSRK
⑨	Trigger	1	ARMORTAK, ARMORLAK
⑩	Secondary lock	1	ARMORTAK, ARMORLAK
⑪	Operating handle	1	ARMORTAK, ARMORLAK
⑫	Main spring	1	ARMORTAK, ARMORLAK, ARMORSRK
⑬	Spring tensioner	1	ARMORTAK, ARMORLAK, ARMORSRK
⑭	Air cylinder	1	ARMORACK
⑮	3-way air valve	1	ARMORACK
⑯	Cover plate	1	ARMORTAK, ARMORLAK, ARMORCPK

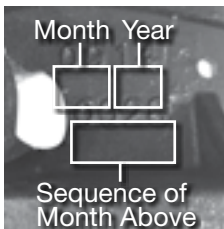
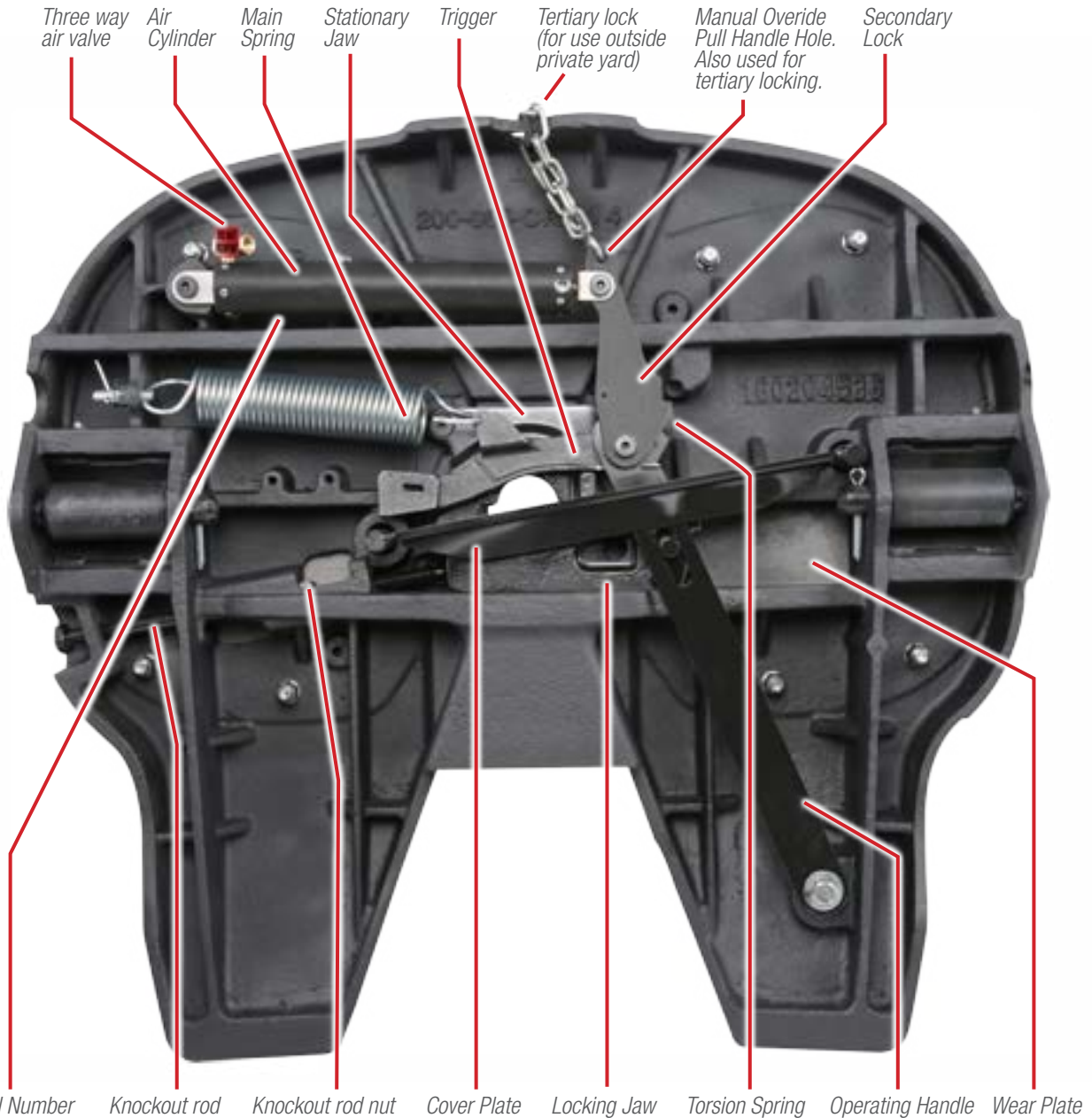

FONTAINE®
 PARTS CONNECTION
 fifthwheel.com • 800.874.9780

ARMOR

THE ONLY FIFTH WHEEL DESIGNED SPECIFICALLY FOR YARD TRUCKS

Faster repairs • Greater uptime • Lowest total cost of ownership

Part Identification – Bottom View



28th fifth wheel
manufactured in
September, 2014

Example serial number
09140028



FONTAINE[®]

PARTS CONNECTION

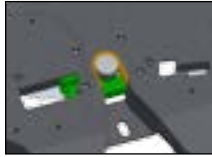
fifthwheel.com • 800.874.9780

ARMOR

THE ONLY FIFTH WHEEL DESIGNED SPECIFICALLY FOR YARD TRUCKS

Faster repairs • Greater uptime • Lowest total cost of ownership

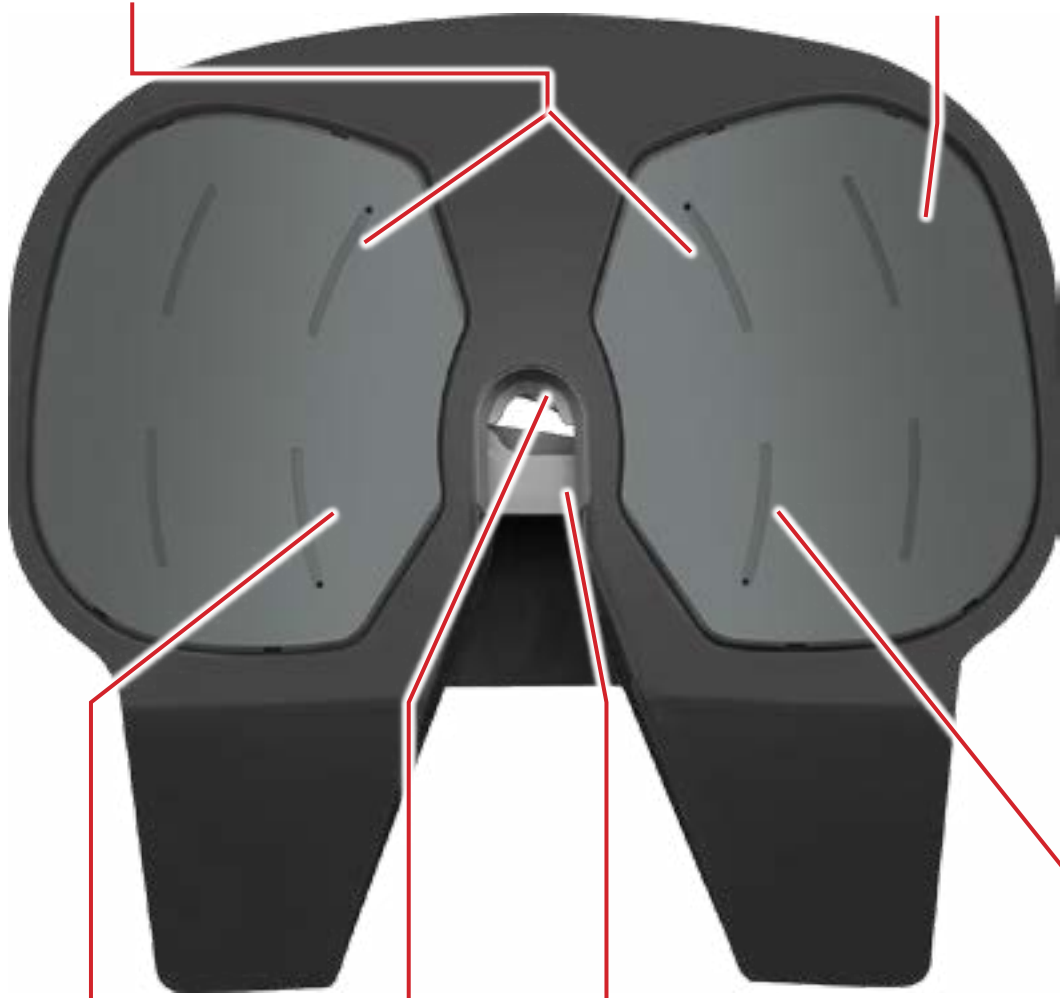
Part Identification – Top View



Wear Plates (removable for easy maintenance)



Air cylinder bolt access (under wear plate)



Locking jaw access (under wear plate). Locking jaw slides in for easy maintenance.



Stationary Jaw

Locking Jaw

Knockout rod access (under wear plate). Slot for easy knockout rod maintenance.



FONTAINE[®]

PARTS CONNECTION

fifthwheel.com • 800.874.9780