

# ARMOR

THE ONLY FIFTH WHEEL DESIGNED SPECIFICALLY FOR YARD TRUCKS

Faster repairs • Greater uptime • Lowest total cost of ownership

## Cover Plate Replacement Instructions

Cover Plate Kit (ARMORCPK)



### Cover Plate Kit

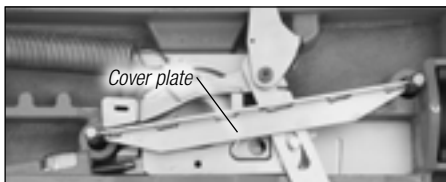
Part # **ARMORCPK**

Standard Repair Time:

**30 Minutes**

Item	Description	Quantity
①	Cover plate	1

See video at [fifthwheel.com/maintenance/](http://fifthwheel.com/maintenance/)  
Choose "Cover Plate Replacement"



Cover Plate Replacement Video available at:  
[fifthwheel.com/armor](http://fifthwheel.com/armor)

Choose "Training" then "Cover Plate Replacement"

Tools Required
Crowbar
Pliers
3/4" deep well socket with 2" extension
9/16" socket
11/16" socket
1/4" allen wrench
Kingpin tool

Personal Protective Equipment
Safety glasses
Work gloves
Steel toe boots



### Warning!

- Keep hands away from throat of operating fifth wheel
- Wear Personal Protective Equipment (PPE)
- Make sure the wheel is disarmed before maintenance
- Follow all instructions
- Read operating manual before use
- Use proper procedures
- Use proper tools



For instructional video scan or go to  
[fifthwheel.com/maintenance/](http://fifthwheel.com/maintenance/)



**FONTAINE**<sup>®</sup>

PARTS CONNECTION

[fifthwheel.com](http://fifthwheel.com) • 800.874.9780

All kits include hardware

# ARMOR

THE ONLY FIFTH WHEEL DESIGNED SPECIFICALLY FOR YARD TRUCKS

Faster repairs • Greater uptime • Lowest total cost of ownership

## Disassembly

Hint: If you need help with parts identification see pages 6-8.



### Warning!

**Important Note:** A typical reason why a cover plate would need to be replaced is damage caused by excessive vertical load. Therefore a detailed inspection (checking for cracks, bent components, etc.) should take place prior to performing the following repair to ensure the fifth wheel is suitable for use.

1



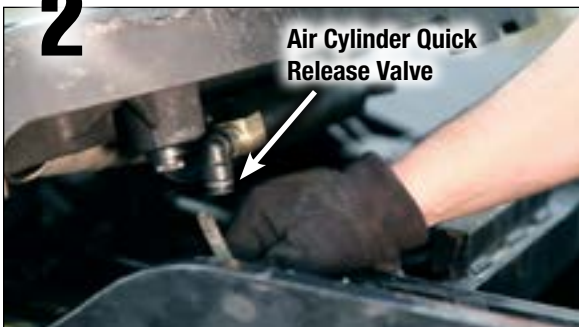
Trip the wheel closed using a crowbar. **NEVER use hands to trip an activated fifth wheel.**



Locking Jaw in Closed Position

**Hint:** A fifth wheel is closed when the locking jaw is completely across the throat of the fifth wheel.

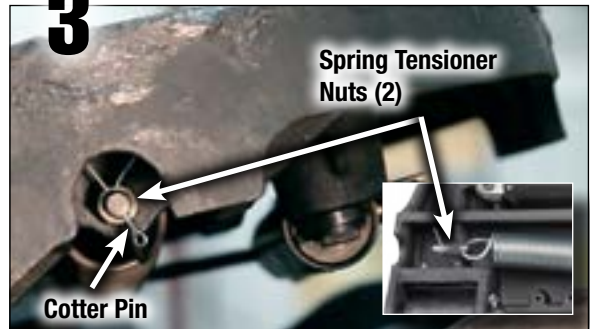
2



Air Cylinder Quick Release Valve

Raise the yard truck boom for easy access, then remove the air hose from the air cylinder quick release valve.

3



Spring Tensioner Nuts (2)

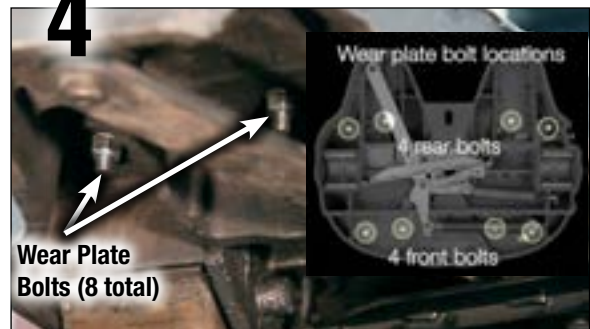
Cotter Pin

Remove two spring tension by removing the cotter pin with pliers. Then remove the two spring tensioner nuts. **Hint:** You can place a screwdriver in the main spring loop to prevent spring from rotating when unbolting nuts (see video).



This deactivates the fifth wheel and allows the user to perform maintenance.

4



Wear Plate Bolts (8 total)

Wear plate bolt locations

4 rear bolts

4 front bolts

Tilt the top plate down to access the two front bolts from the opposite side of the top plate. Remove the eight wear plate nuts and washers. Note all eight nut locations in photo.

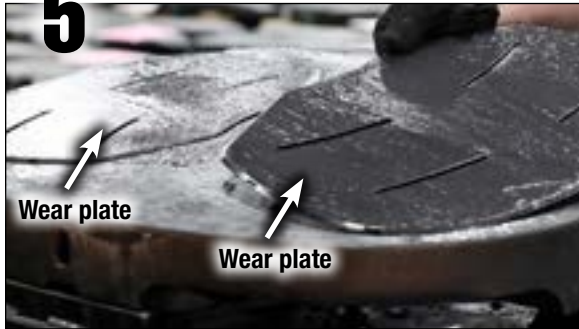
# ARMOR

THE ONLY FIFTH WHEEL DESIGNED SPECIFICALLY FOR YARD TRUCKS

Faster repairs • Greater uptime • Lowest total cost of ownership

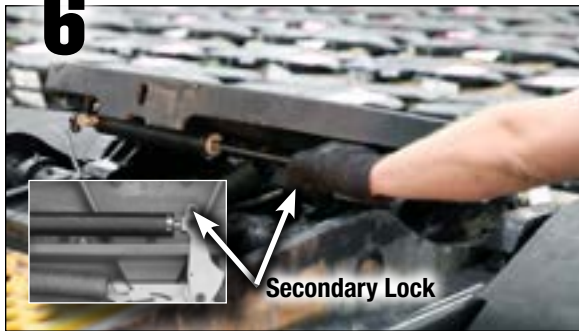
## Disassembly

**5**



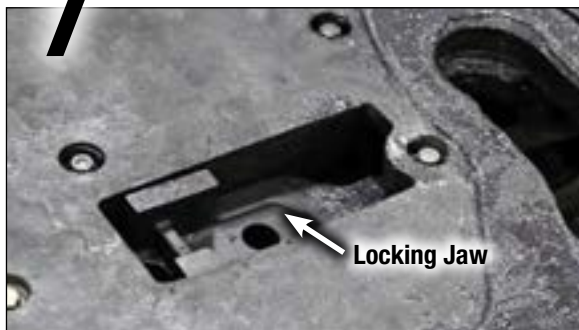
Remove both wear plates.

**6**



Tilt wheel down in rear to access secondary lock.  
Pull the secondary lock to open the fifth wheel.

**7**

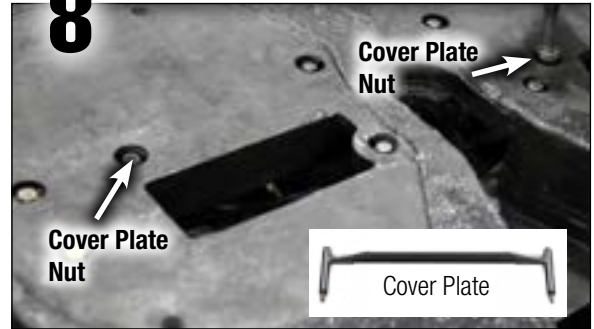


Notice locking jaw is now visible because wear plate is off  
and fifth wheel is in open position.



Pull the locking jaw out of the top surface of the wheel.

**8**



Remove both cover plate nuts.



Push up cover plate to access the two cover plate nuts.



Remove cover plate from below.

# ARMOR

THE ONLY FIFTH WHEEL DESIGNED SPECIFICALLY FOR YARD TRUCKS

Faster repairs • Greater uptime • Lowest total cost of ownership

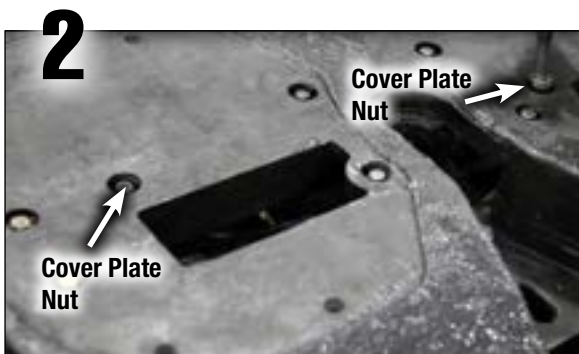
## Assembly



Install lock washers before installing cover plate.



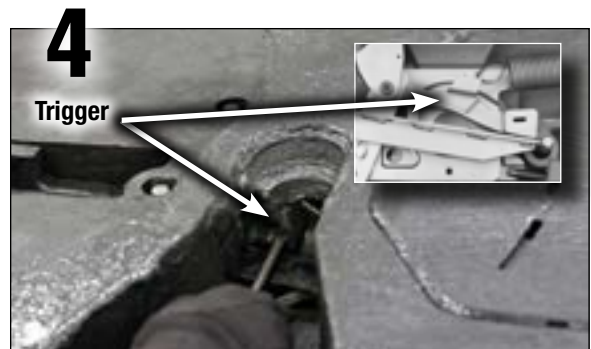
Make sure cover plate is orientate properly with the angled side pointing towards you.



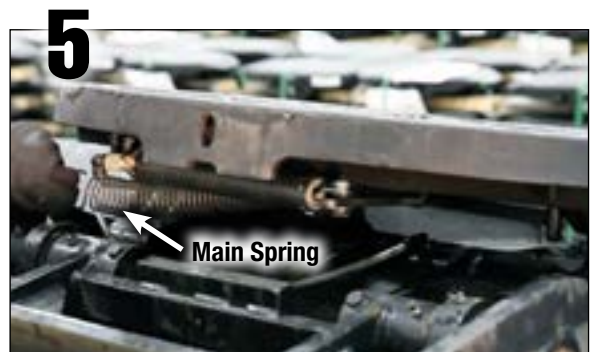
Fasten the two cover plate nuts and bolts.



Position the jaw pin into the slot of the operating handle.



Trip the trigger off the stationary jaw stop. It pushes in.



Close the fifth wheel by pulling the main spring.

# ARMOR

THE ONLY FIFTH WHEEL DESIGNED SPECIFICALLY FOR YARD TRUCKS

Faster repairs • Greater uptime • Lowest total cost of ownership

## Assembly

6



Install both wear plates.

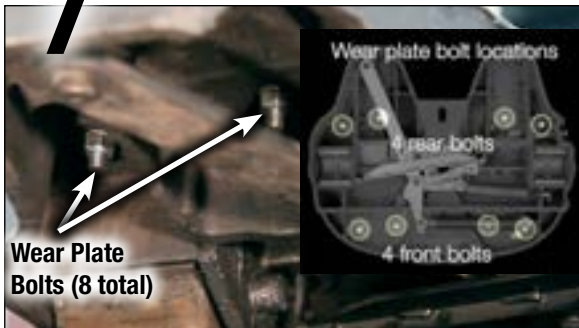
9



Cotter Pin

Install the cotter pin.

7



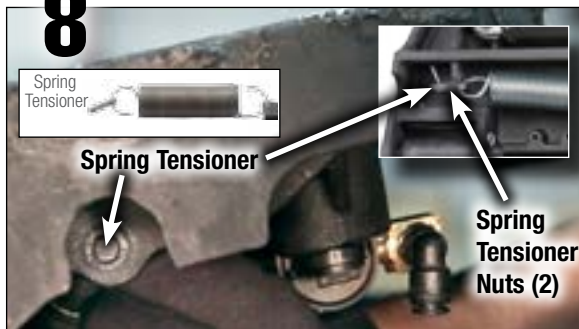
Install the eight wear plate nuts and washers. You can tilt fifth wheel up and down for easy access. Note all bolt locations in photo.

10



Connect the air hose to the air cylinder quick release valve.

8



Insert the spring tensioner through the hole.

Install the TWO spring tensioner nuts. **Hint:** You can place a screwdriver in the main spring loop to prevent spring from rotating when bolting on nuts (see video).

11



Tilt the fifth wheel down and lower the yard truck boom.

Test the wheel using the Fontaine kingpin tool (ARMORKPK) by frequently opening and closing the fifth wheel (see video).

Test Kingpin Tool  
Part # **ARMORKPK**



Test Kingpin Tool

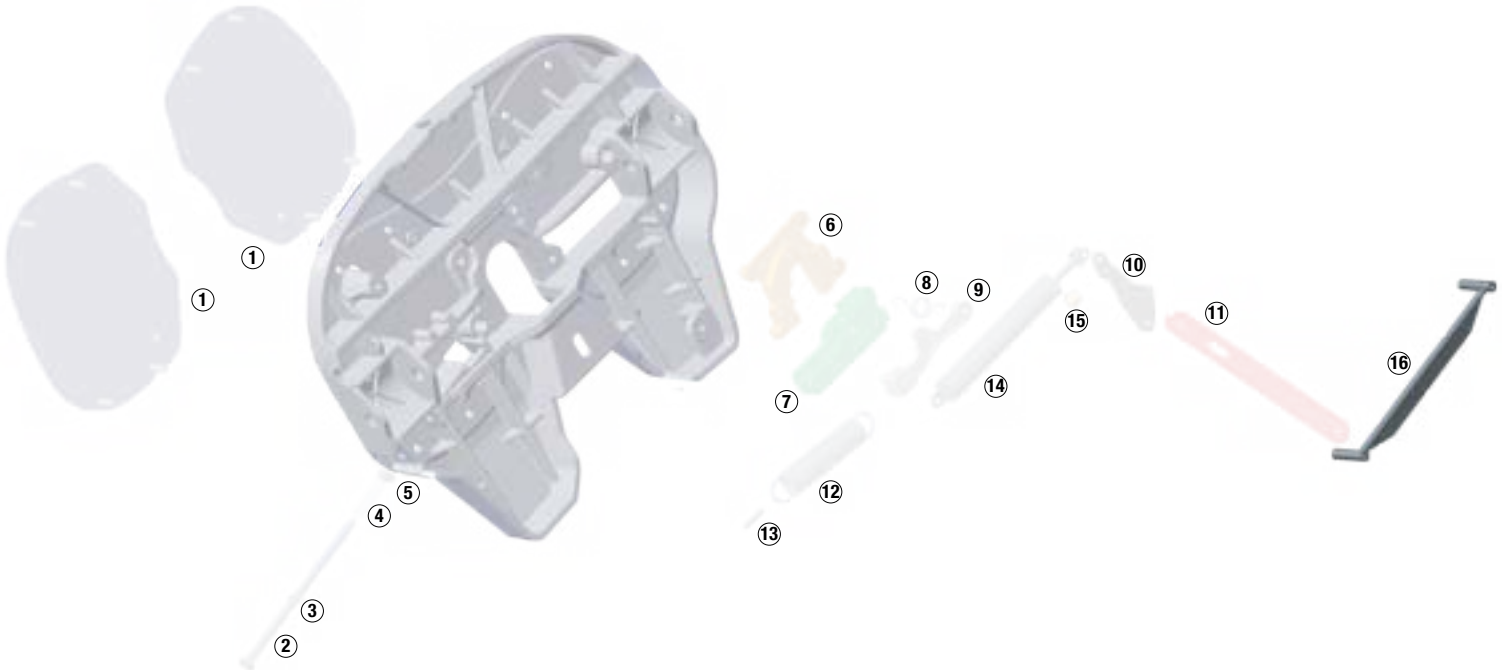
All kits include hardware

# ARMOR

THE ONLY FIFTH WHEEL DESIGNED SPECIFICALLY FOR YARD TRUCKS

Faster repairs • Greater uptime • Lowest total cost of ownership

## Part Identification



Item	Description	Quantity	Included in kit
①	Wear plate	2	ARMORWPK
②	Knockout rod	1	ARMORKRK
③	Knockout rod clip	1	ARMORKRK
④	Knockout rod spring	1	ARMORKRK
⑤	Knockout rod nut	1	ARMORKRK
⑥	Stationary jaw	1	ARMORSJK, ARMORLAK
⑦	Locking jaw	1	ARMORJRK, ARMORLAK
⑧	Torsion spring	1	ARMORTAK, ARMORLAK, ARMORSRK
⑨	Trigger	1	ARMORTAK, ARMORLAK
⑩	Secondary lock	1	ARMORTAK, ARMORLAK
⑪	Operating handle	1	ARMORTAK, ARMORLAK
⑫	Main spring	1	ARMORTAK, ARMORLAK, ARMORSRK
⑬	Spring tensioner	1	ARMORTAK, ARMORLAK, ARMORSRK
⑭	Air Cylinder	1	ARMORACK
⑮	3-way air valve	1	ARMORACK
⑯	<b>Cover plate</b>	<b>1</b>	<b>ARMORTAK, ARMORLAK, ARMORCPK</b>



**FONTAINE®**

PARTS CONNECTION

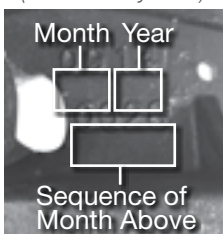
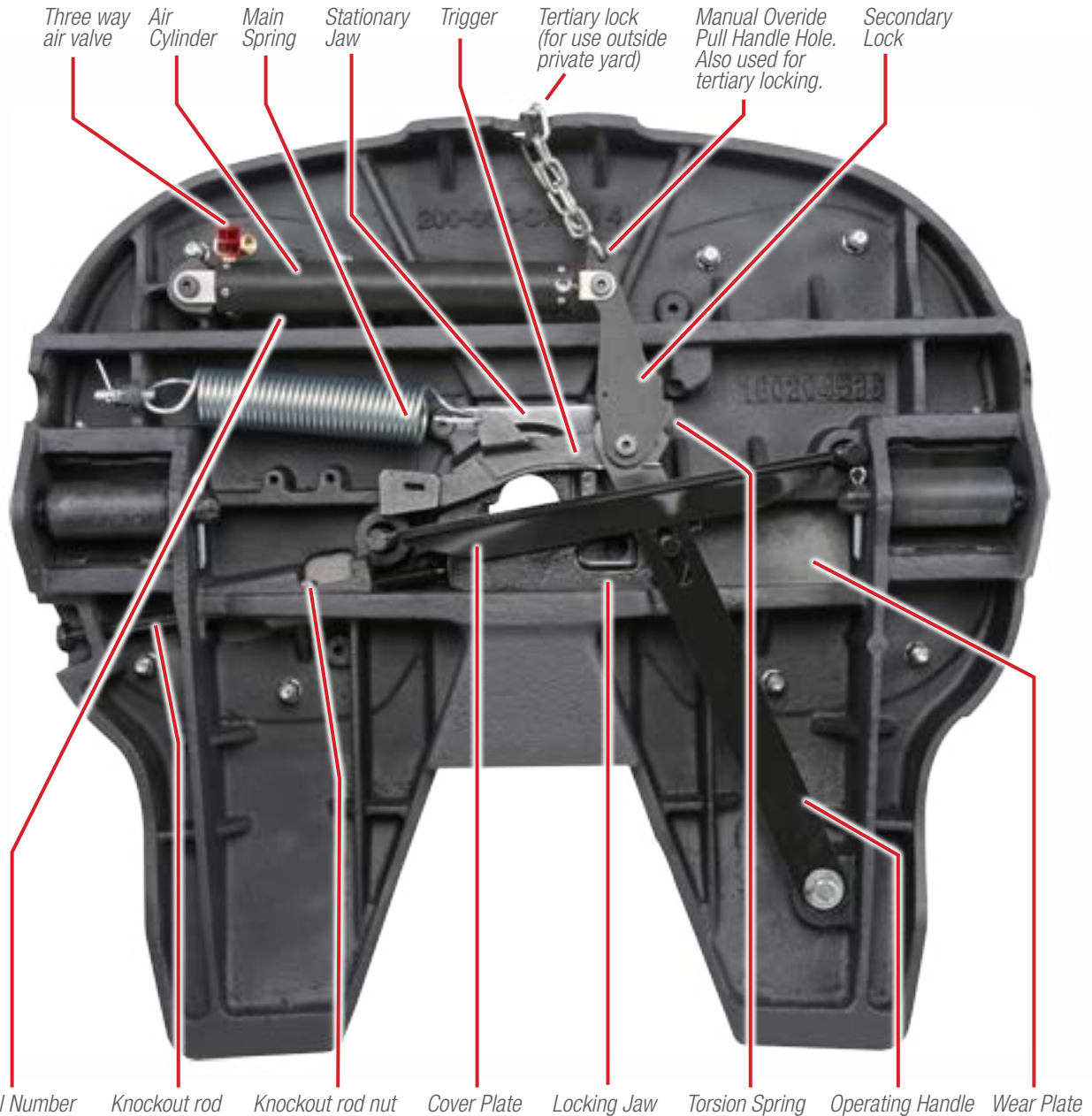
fifthwheel.com • 800.874.9780

# ARMOR

THE ONLY FIFTH WHEEL DESIGNED SPECIFICALLY FOR YARD TRUCKS

Faster repairs • Greater uptime • Lowest total cost of ownership

## Part Identification – Bottom View



28th fifth wheel  
manufactured in  
September, 2014

Example serial number  
09140028



**FONTAINE**<sup>®</sup>

PARTS CONNECTION

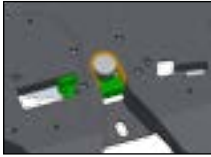
fifthwheel.com • 800.874.9780

# ARMOR

THE ONLY FIFTH WHEEL DESIGNED SPECIFICALLY FOR YARD TRUCKS

Faster repairs • Greater uptime • Lowest total cost of ownership

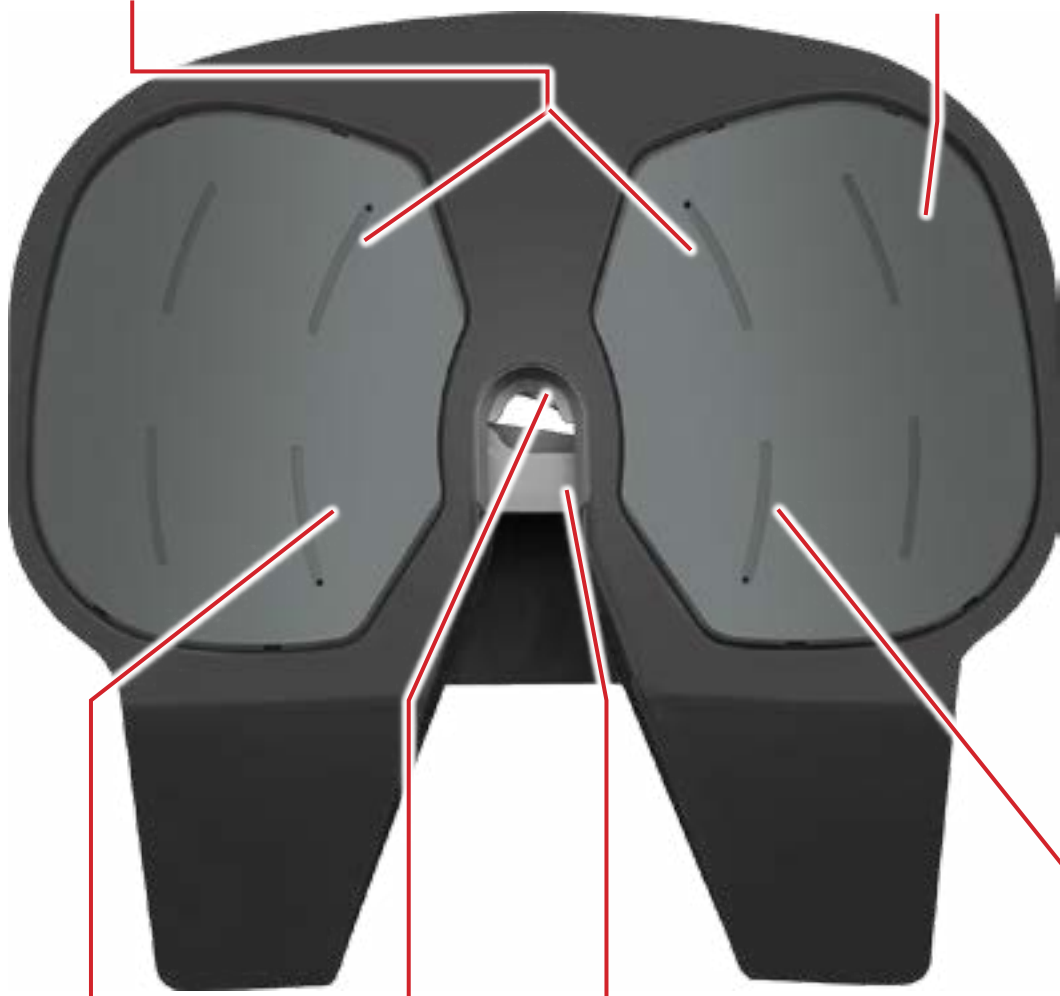
## Part Identification – Top View



Wear Plates (removable for easy maintenance)



Air cylinder bolt access (under wear plate)



Locking jaw access (under wear plate). Locking jaw slides in for easy maintenance.



Stationary Jaw

Locking Jaw

Knockout rod access (under wear plate). Slot for easy knockout rod maintenance.



**FONTAINE**<sup>®</sup>

PARTS CONNECTION

fifthwheel.com • 800.874.9780